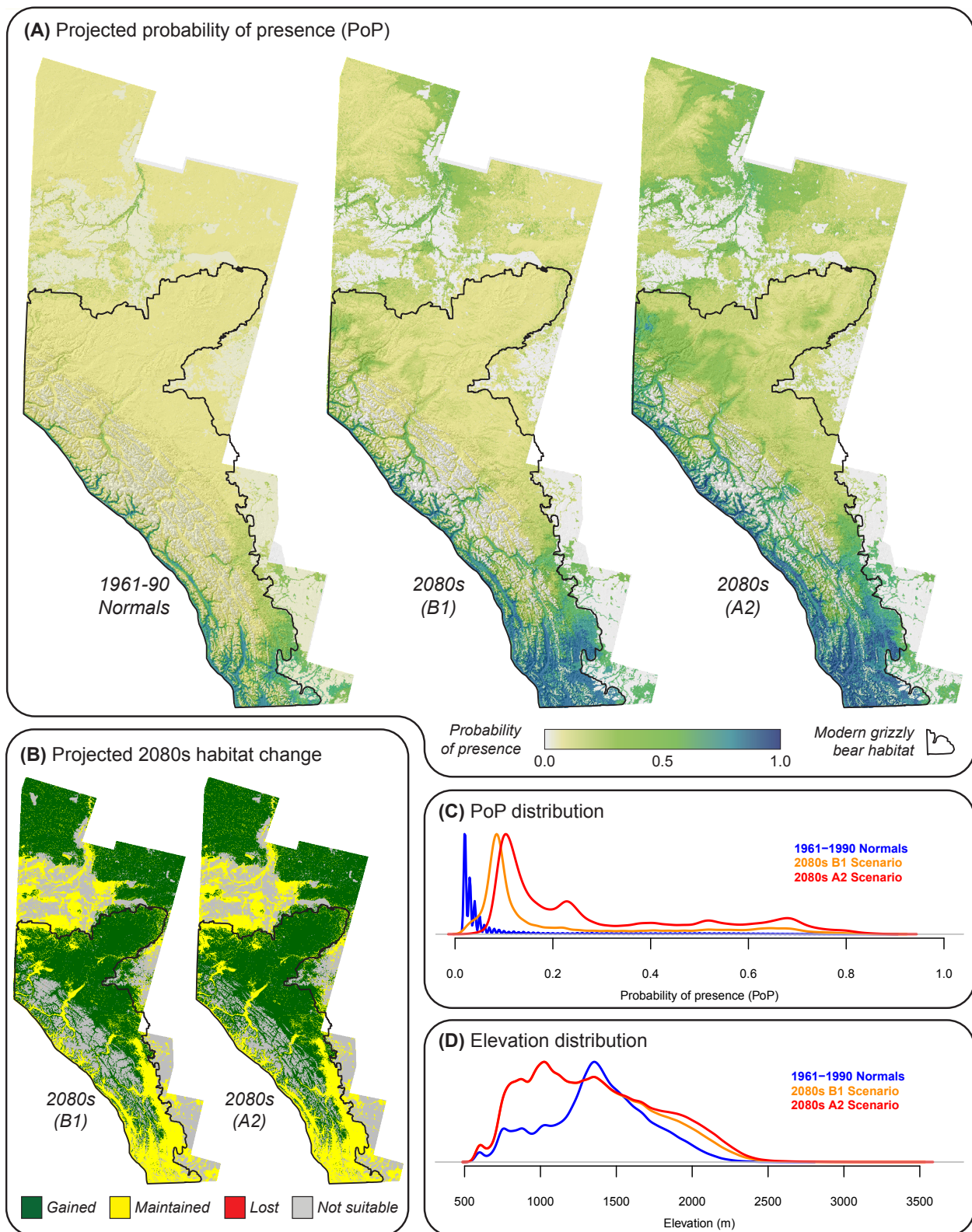
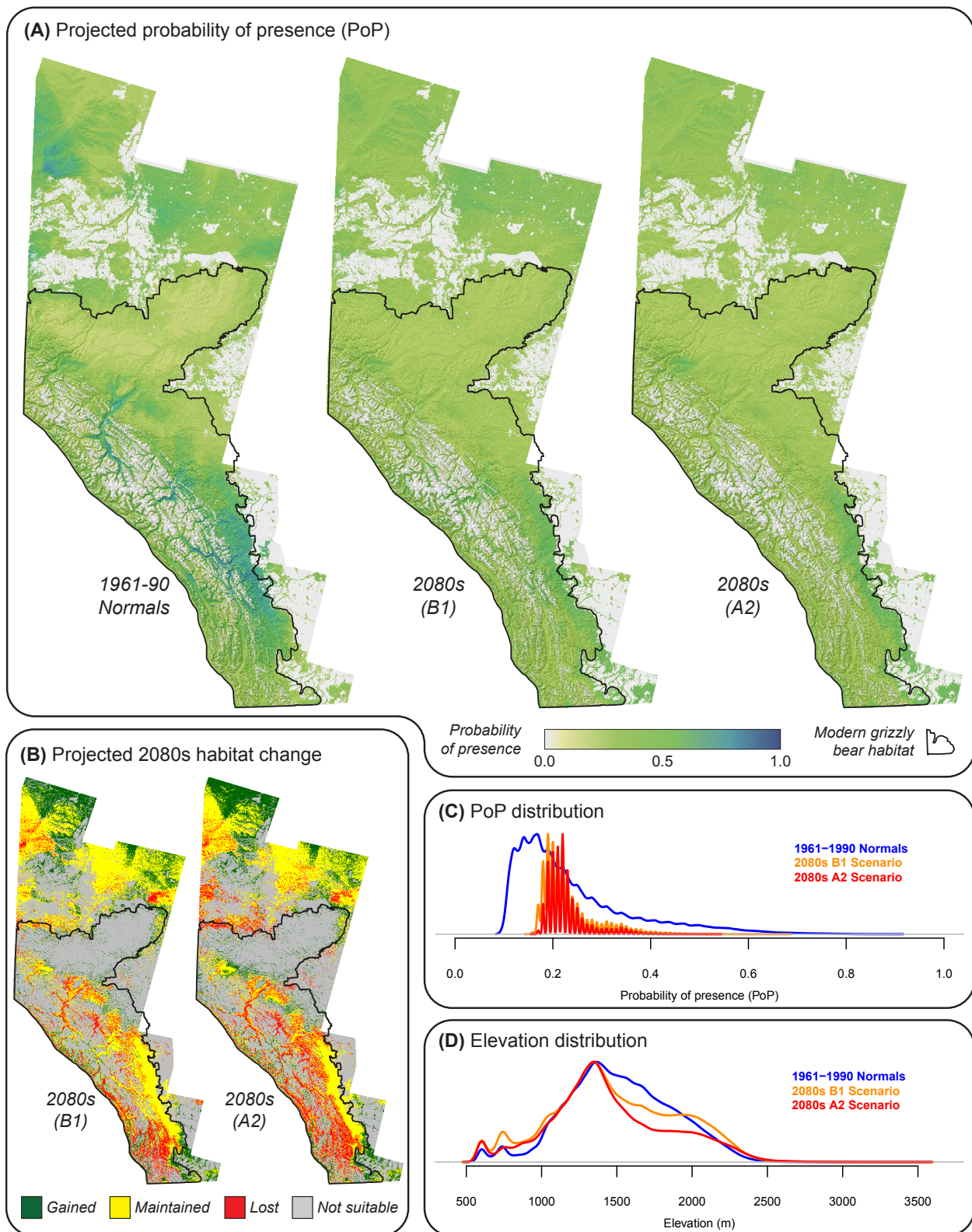


**Appendix B:** For each of the 17 species, **(A)** maps of probability of presence (PoP) for the 1961-90 period and for the B1 and A2 scenarios for the 2080s; **(B)** maps of projected change in habitat, showing range gained (absent in 1961-90, present in future), range lost (present in 1961-90, absent in future), range maintained (present in 1961-90, present in future), and not suitable range (absent in 1961-90, absent in future) for the two scenarios (B1 and A2) of the 2080s projections; **(C)** standardized probability density function plots for projected PoP within grizzly bear habitat; **(D)** standardized probability density function plots for the elevations of projected species presence locations within grizzly bear habitat.

|     |   |    |
|-----|---|----|
| B1  | <i>Amelanchier alnifolia</i> (saskatoon) . . . . .      | 2  |
| B2  | <i>Arctostaphylos uva-ursi</i> (bearberry) . . . . .    | 3  |
| B3  | <i>Empetrum nigrum</i> (crowberry) . . . . .            | 4  |
| B4  | <i>Equisetum arvense</i> (horsetail) . . . . .          | 5  |
| B5  | <i>Fragaria virginiana</i> (wild strawberry) . . . . .  | 6  |
| B6  | <i>Hedysarum alpinum</i> (alpine sweet vetch) . . . . . | 7  |
| B7  | <i>Heracleum lanatum</i> (cow parsnip) . . . . .        | 8  |
| B8  | <i>Ribes</i> sp. (gooseberry) . . . . .                 | 9  |
| B9  | <i>Rubus idaeus</i> (raspberry) . . . . .               | 10 |
| B10 | <i>Shepherdia canadensis</i> (buffaloberry) . . . . .   | 11 |
| B11 | <i>Taraxacum officinale</i> (dandelion) . . . . .       | 12 |
| B12 | <i>Trifolium</i> sp. (clover) . . . . .                 | 13 |
| B13 | <i>Vaccinium membranaceum</i> (huckleberry) . . . . .   | 14 |
| B14 | <i>Vaccinium myrtilloides</i> (blueberry) . . . . .     | 15 |
| B15 | <i>Vaccinium scoparium</i> (grouseberry) . . . . .      | 16 |
| B16 | <i>Vaccinium vitis-idaea</i> (lingonberry) . . . . .    | 17 |
| B17 | <i>Viburnum</i> sp. (cranberry) . . . . .               | 18 |

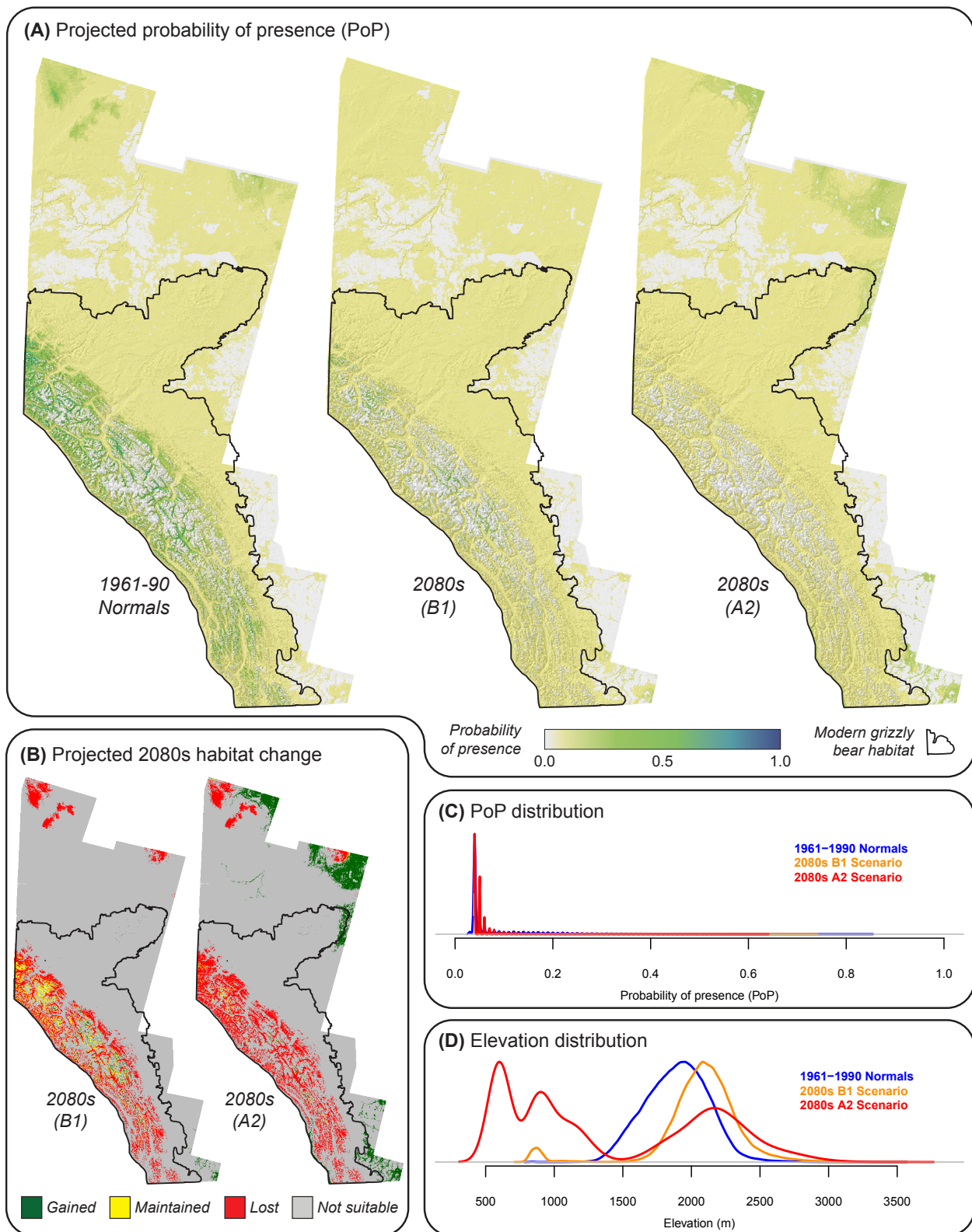


**Fig. B1:** *Amelanchier alnifolia* (saskatoon).



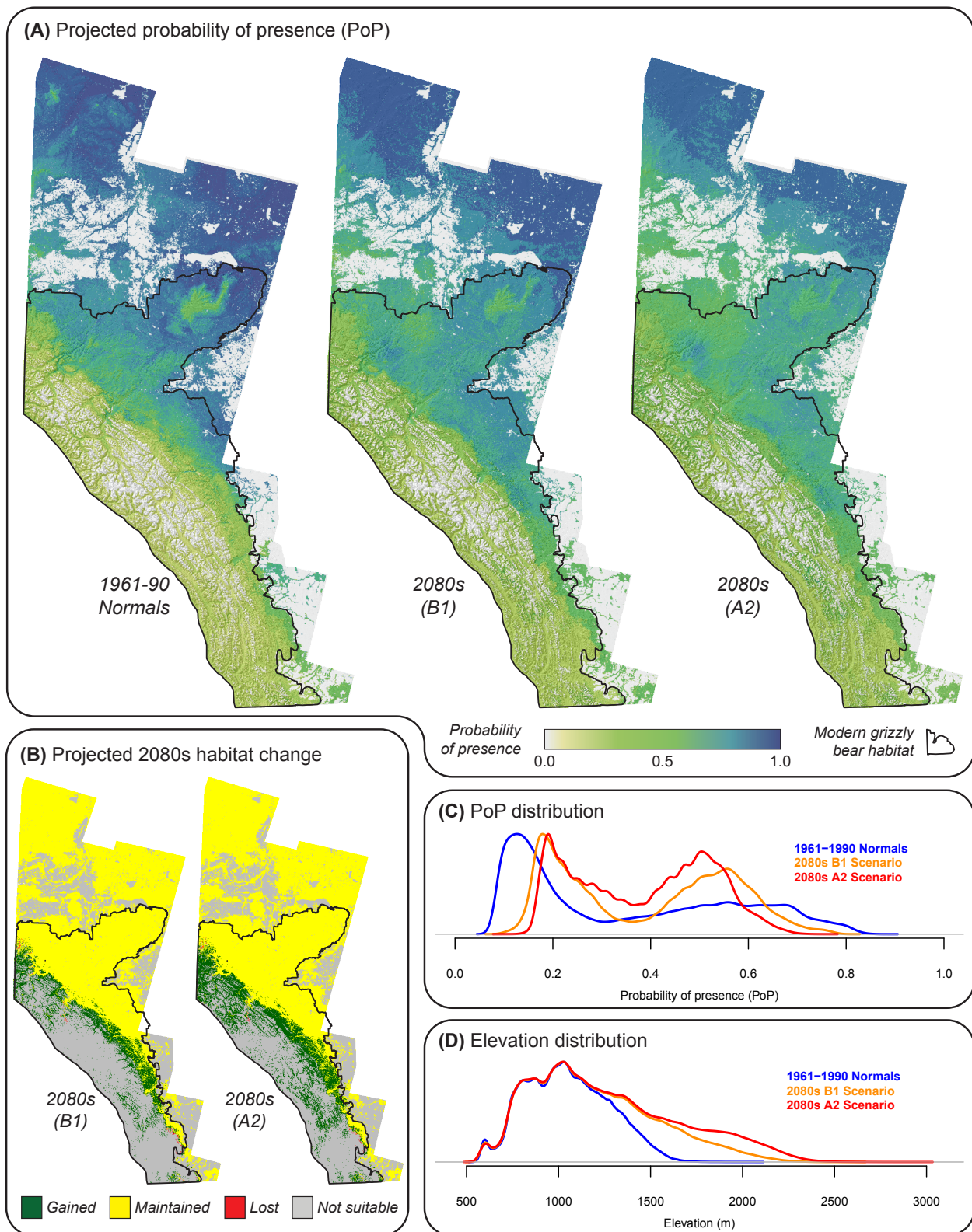
**Fig. B2:** *Arctostaphylos uva-ursi* (bearberry).



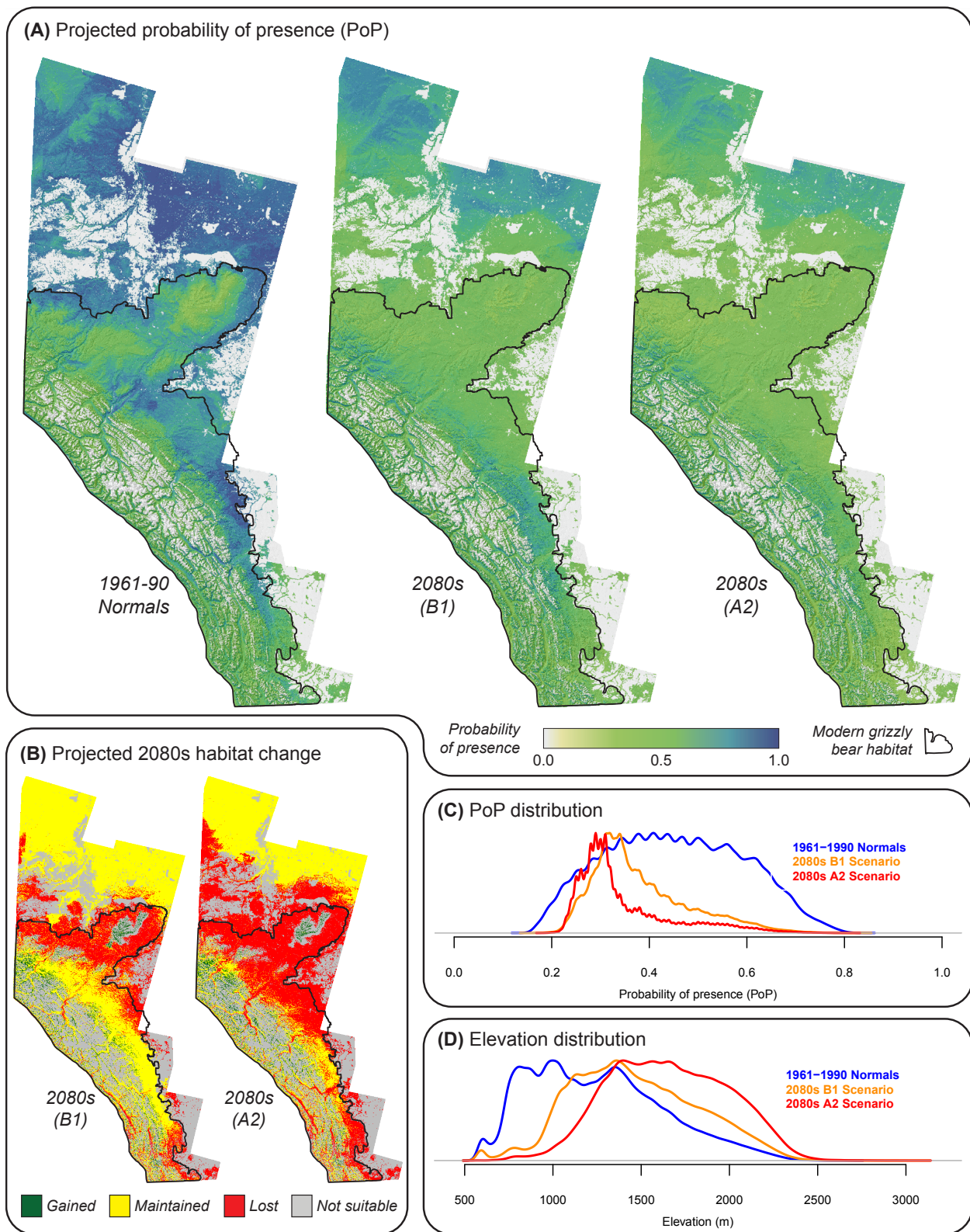


**Fig. B3:** *Empetrum nigrum* (crowberry).



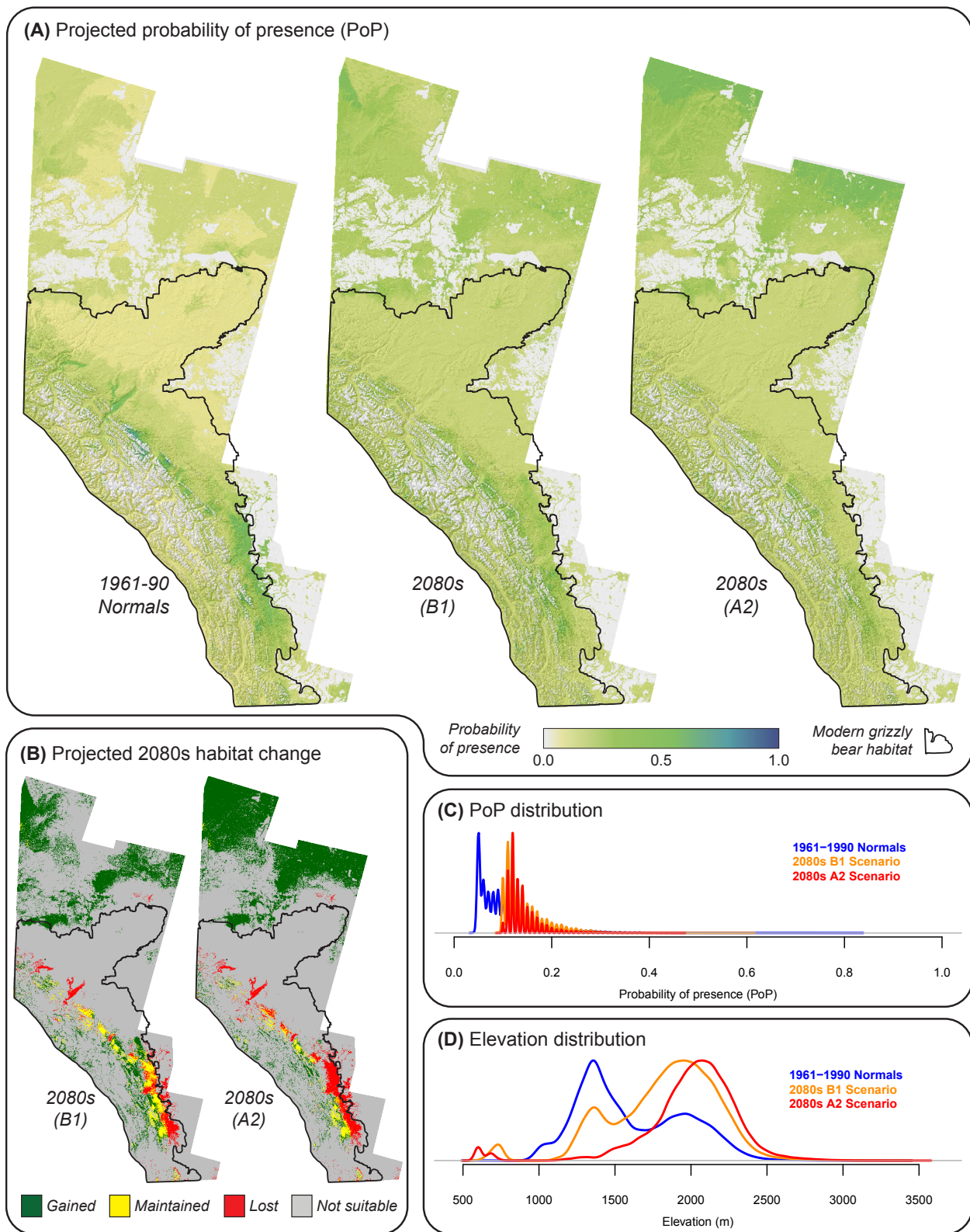


**Fig. B4:** *Equisetum arvense* (horsetail).



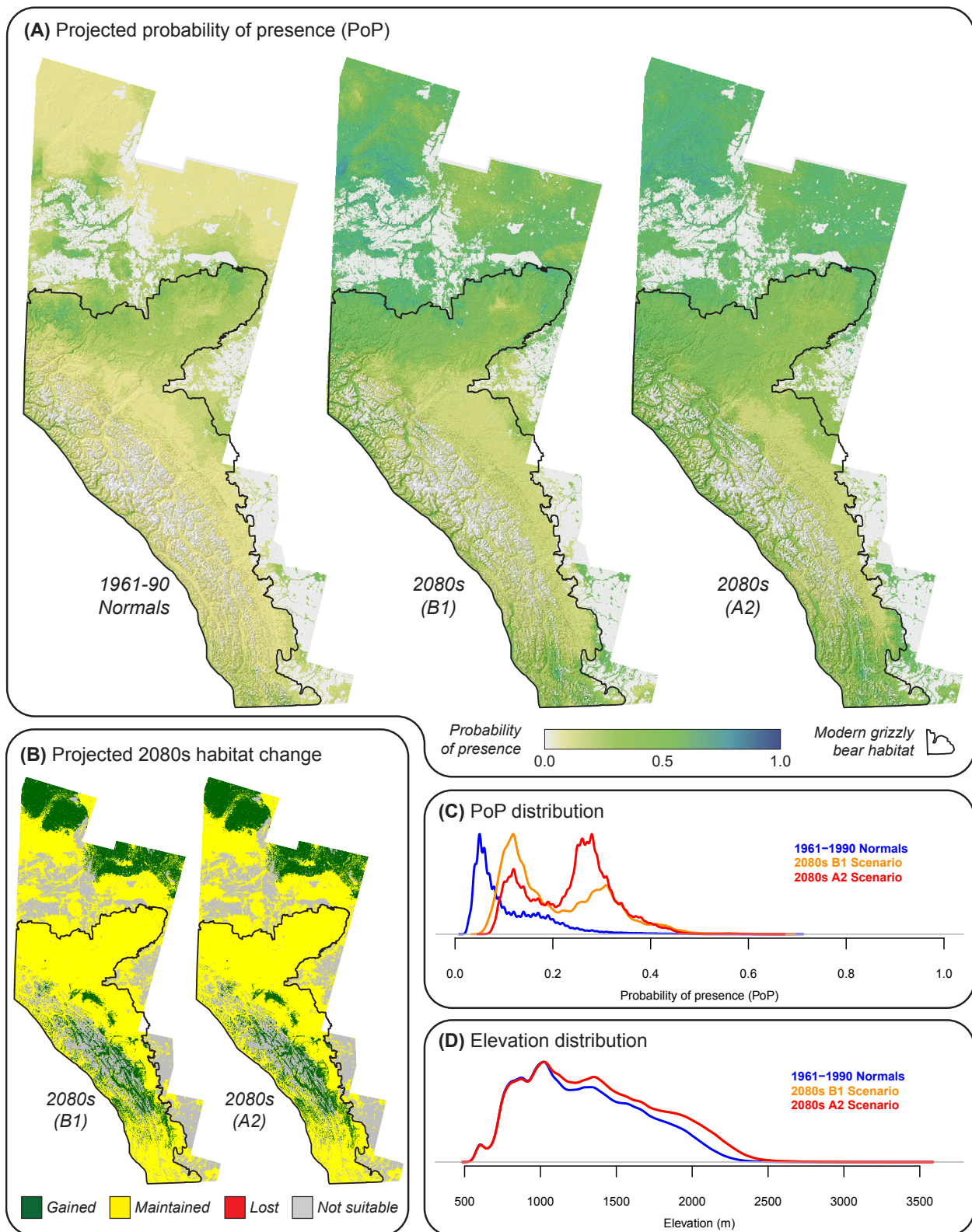
**Fig. B5:** *Fragaria virginiana* (wild strawberry).



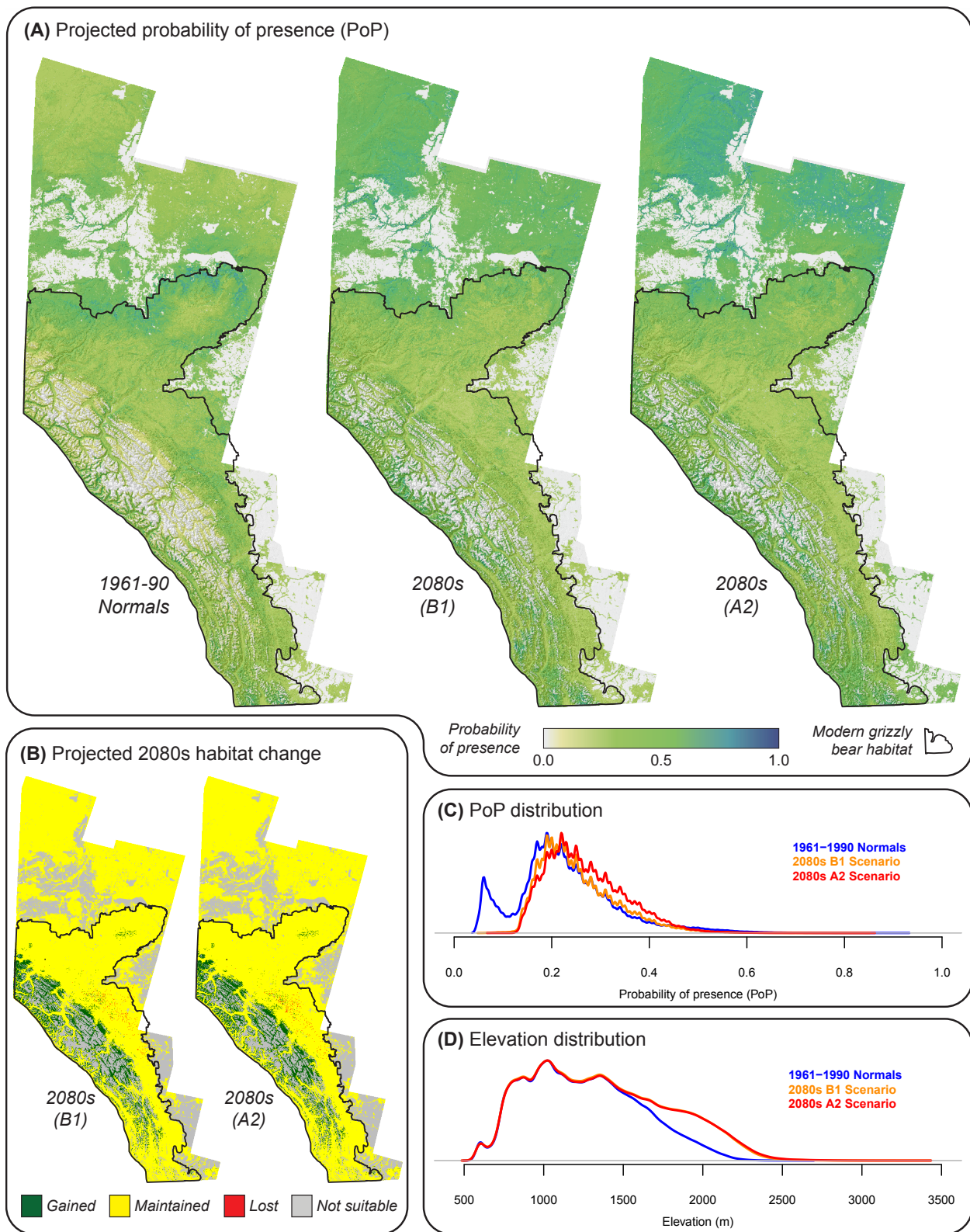


**Fig. B6:** *Hedysarum alpinum* (alpine swet vetch).



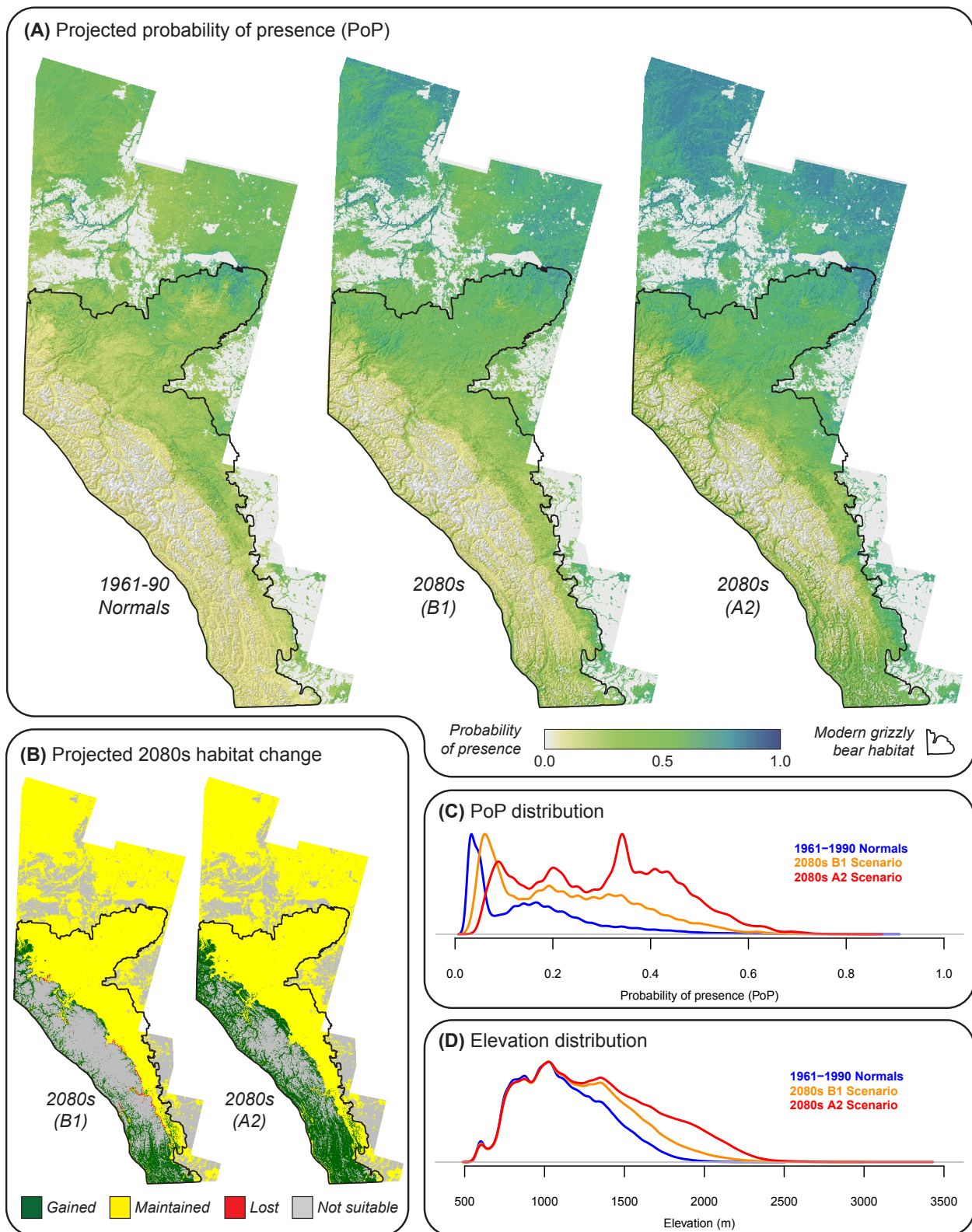


**Fig. B7:** *Heracleum lanatum* (cow parsnip).



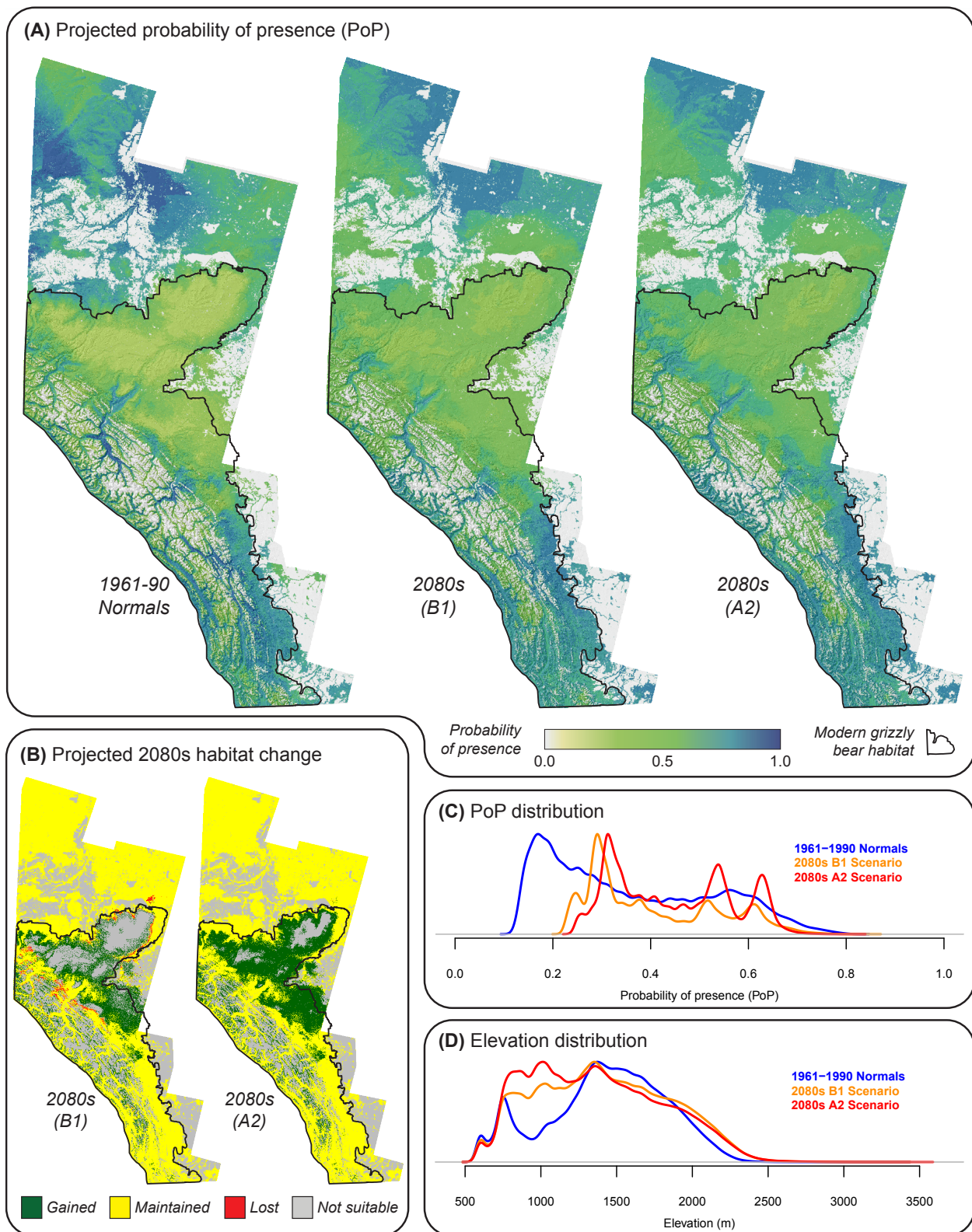
**Fig. B8:** *Ribes* sp. (gooseberry).



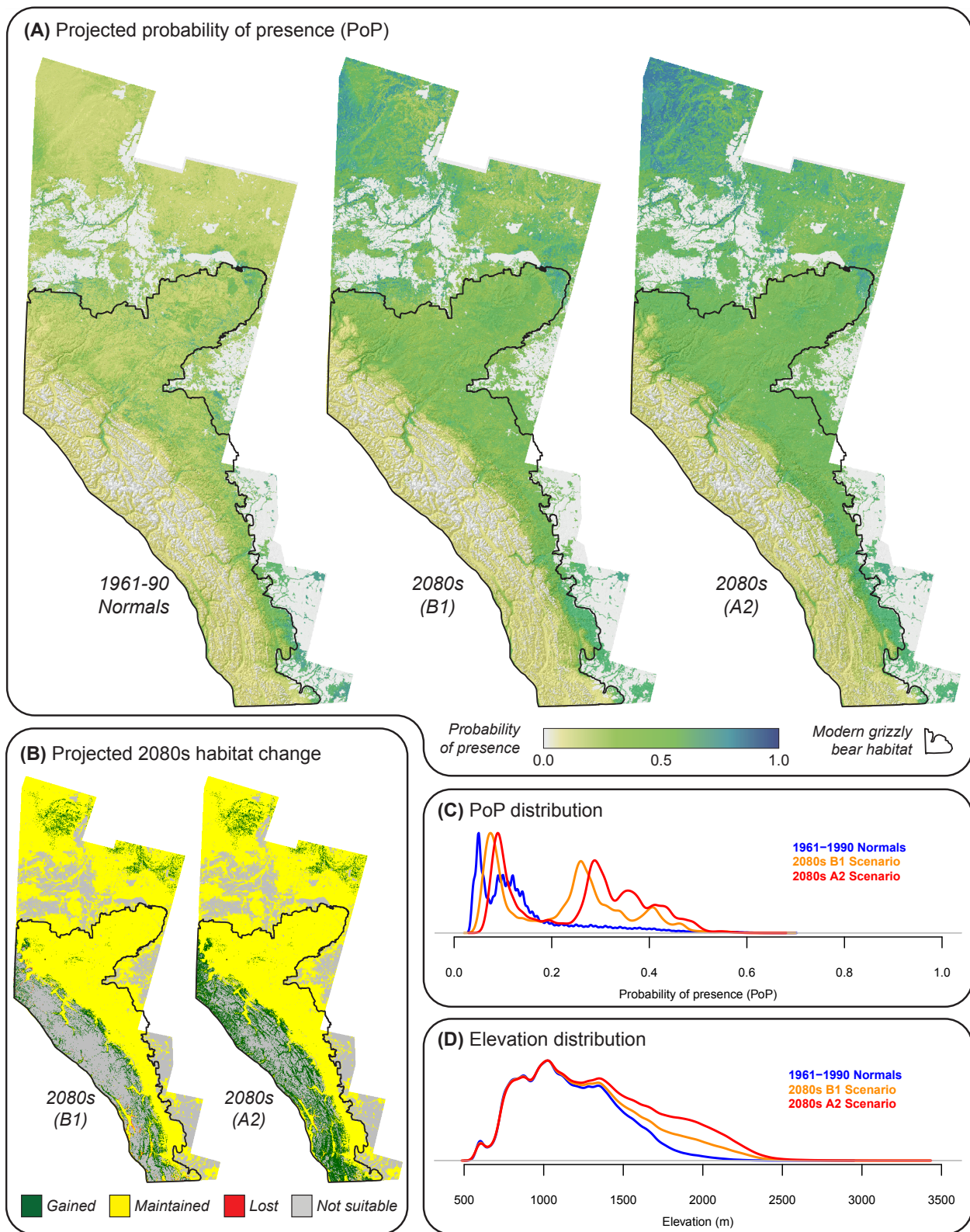


**Fig. B9:** *Rubus idaeus* (raspberry).



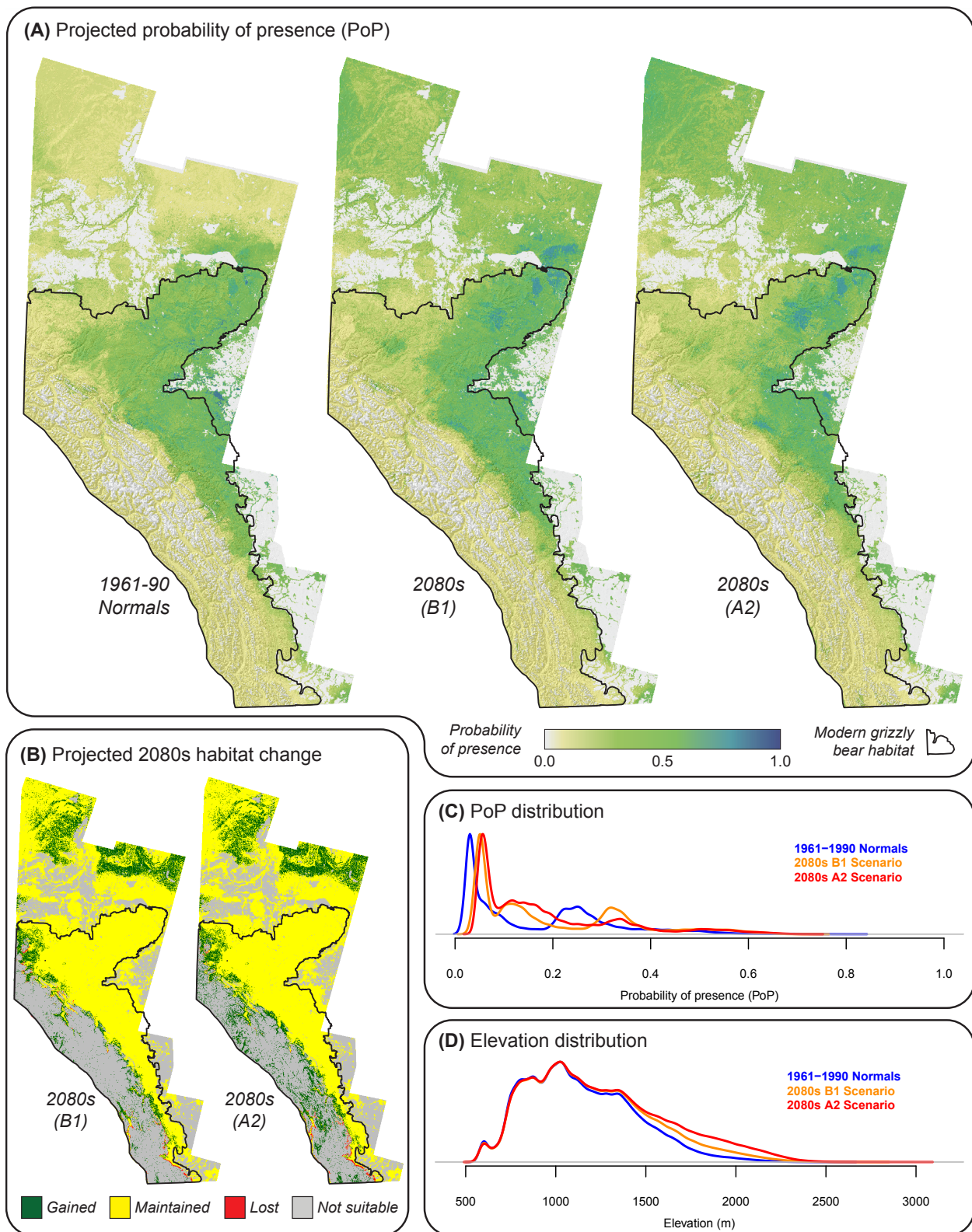


**Fig. B10:** *Shepherdia canadensis* (buffaloberry)..



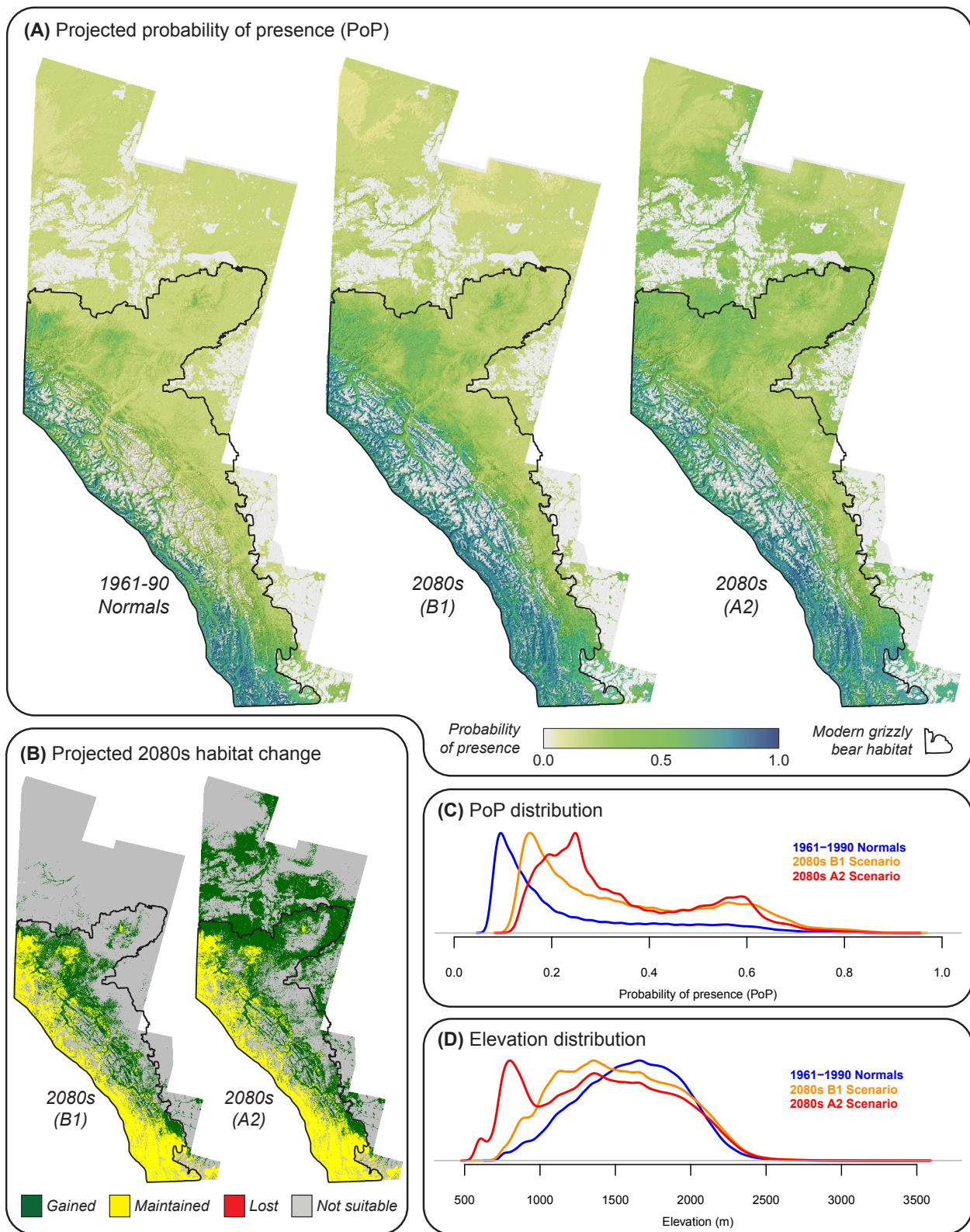
**Fig. B11:** *Taraxacum officinale* (dandelion).



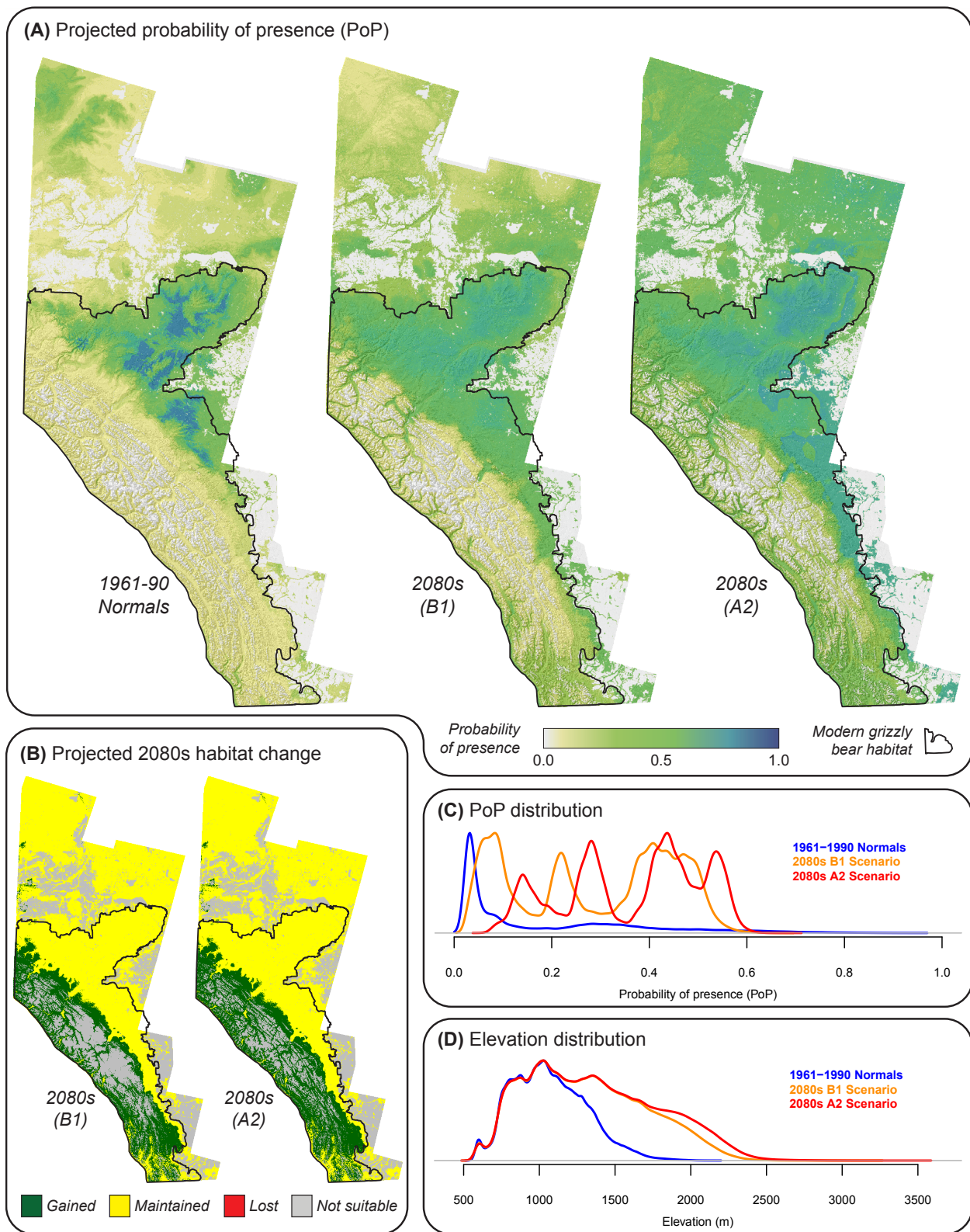


**Fig. B12:** *Trifolium* sp. (clover).



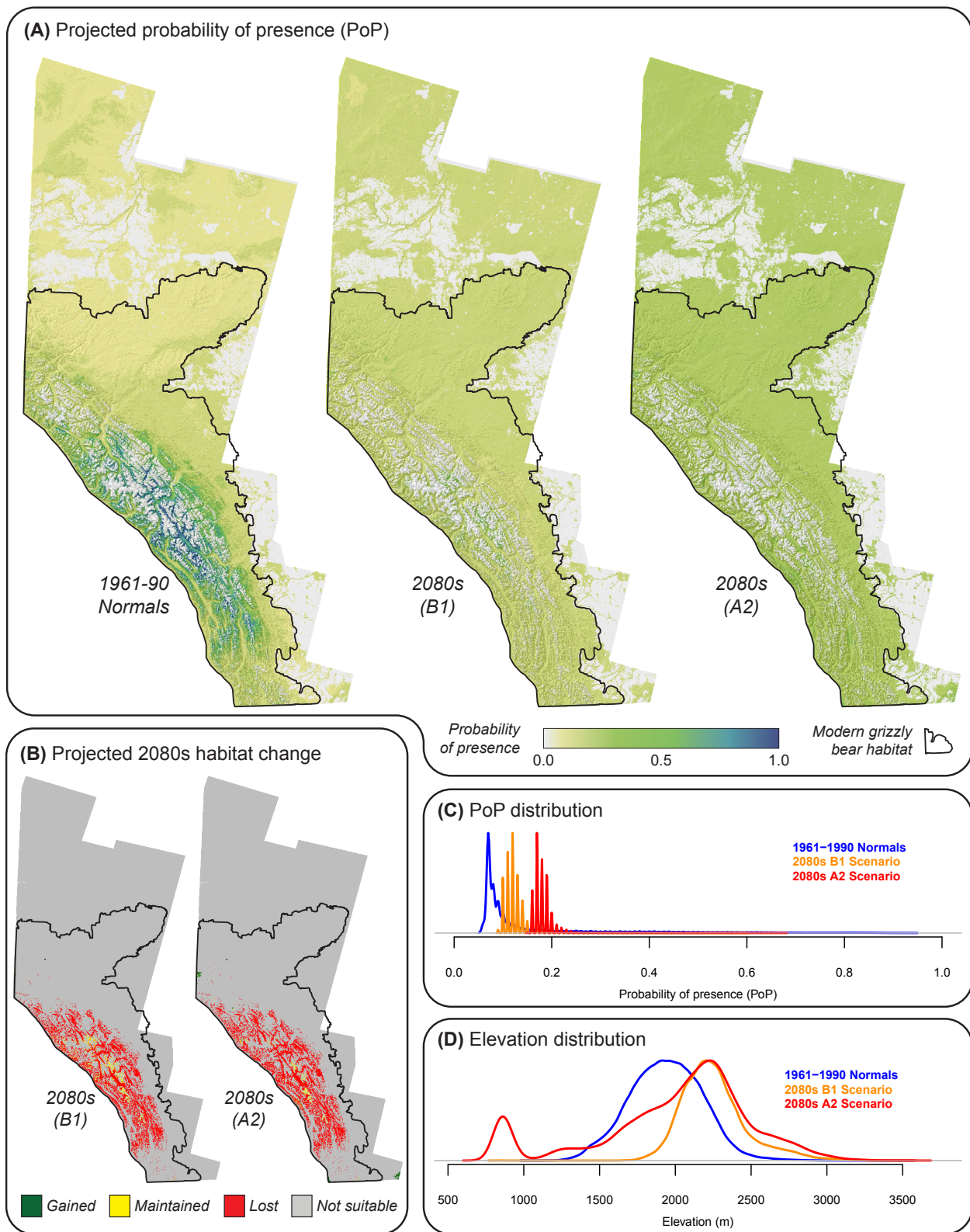


**Fig. B13:** *Vaccinium membranaceum* (huckleberry).



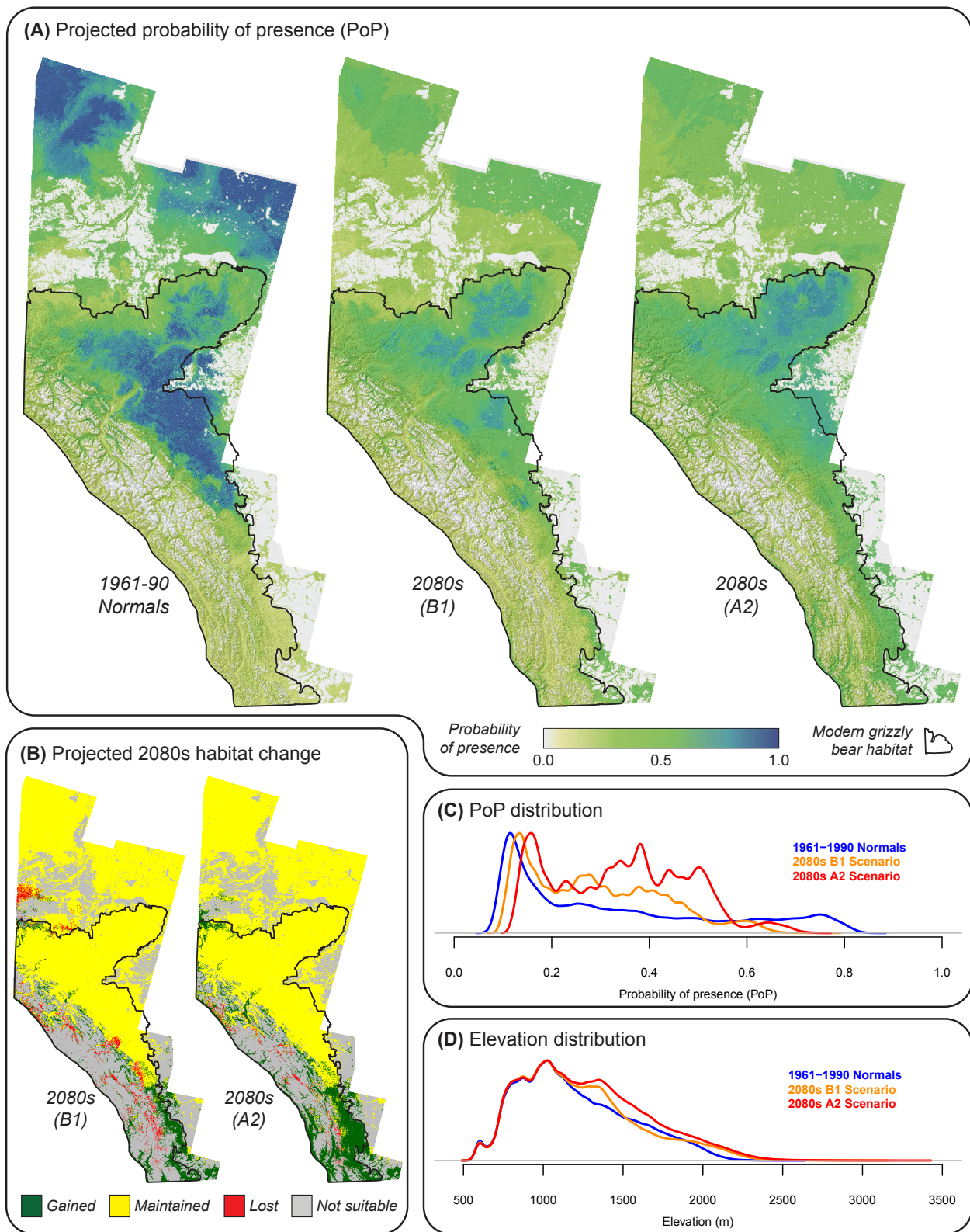
**Fig. B14:** *Vaccinium myrtilloides* (blueberry).



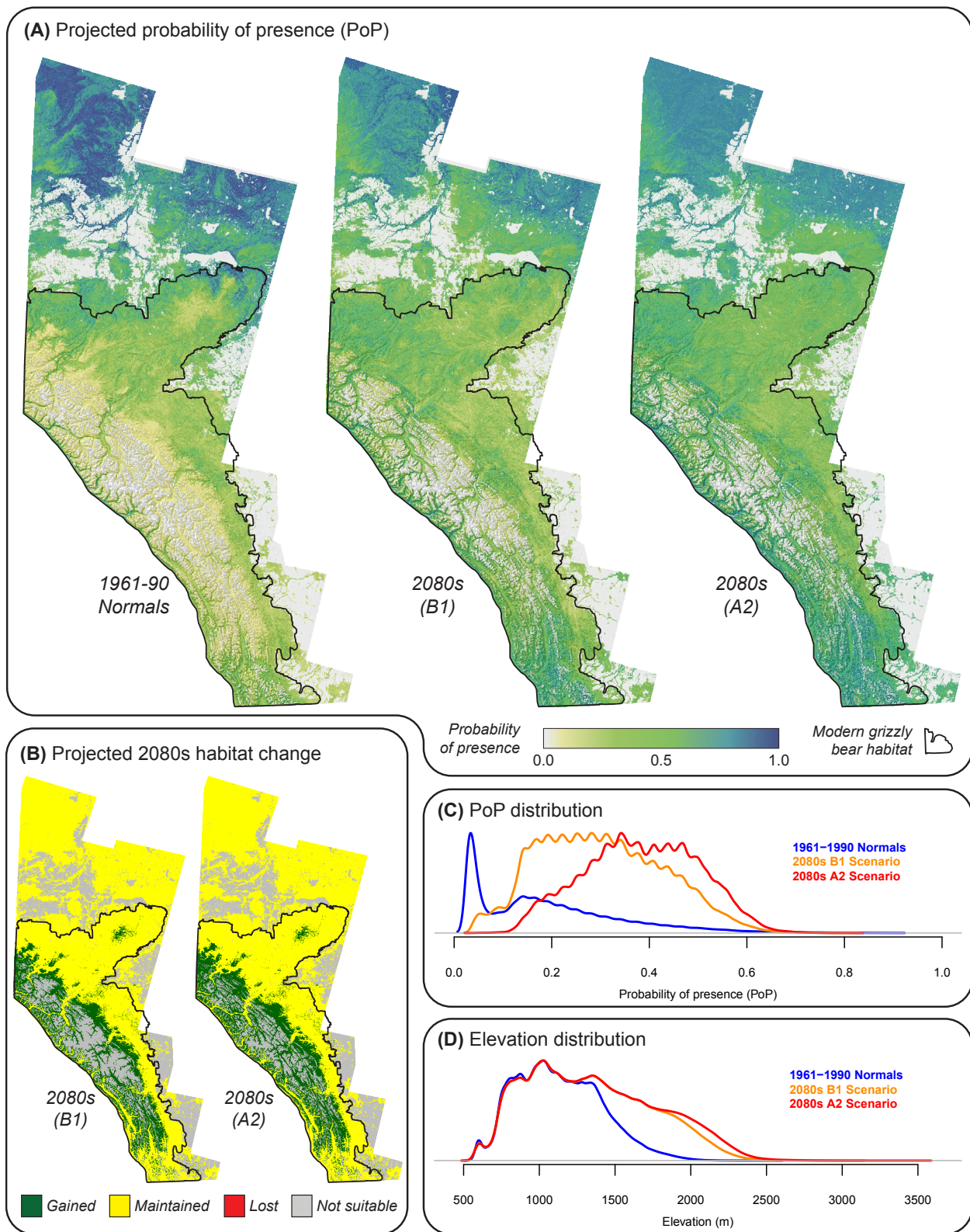


**Fig. B15:** *Vaccinium scoparium* (grouseberry).





**Fig. B16:** *Vaccinium vitis-idaea* (lingonberry).



**Fig. B17:** *Viburnum* sp. (cranberry).